

**University Avenue
Improvements &
Artwalk 2
Enhancement Project
City of Rochester**



**Department of
Environmental Services**

**Bergmann
associates**
www.bergmannpc.com

28 East Main Street
200 First Federal Plaza
Rochester, New York 14614
585.232.5135 / 585.232.4652 fax

Engineers / Architects / Planners / Surveyors

REVISIONS				
NO.	DATE	DESCRIPTION	REV.	CK'D

UTILITY VERIFICATION:
The underground structures and utilities shown on this drawing have been plotted from available surveys or utility record maps. They are not certified to the accuracy of their location or their competence. It is the Contractor's responsibility to verify the location and extent of all underground structures and utilities.

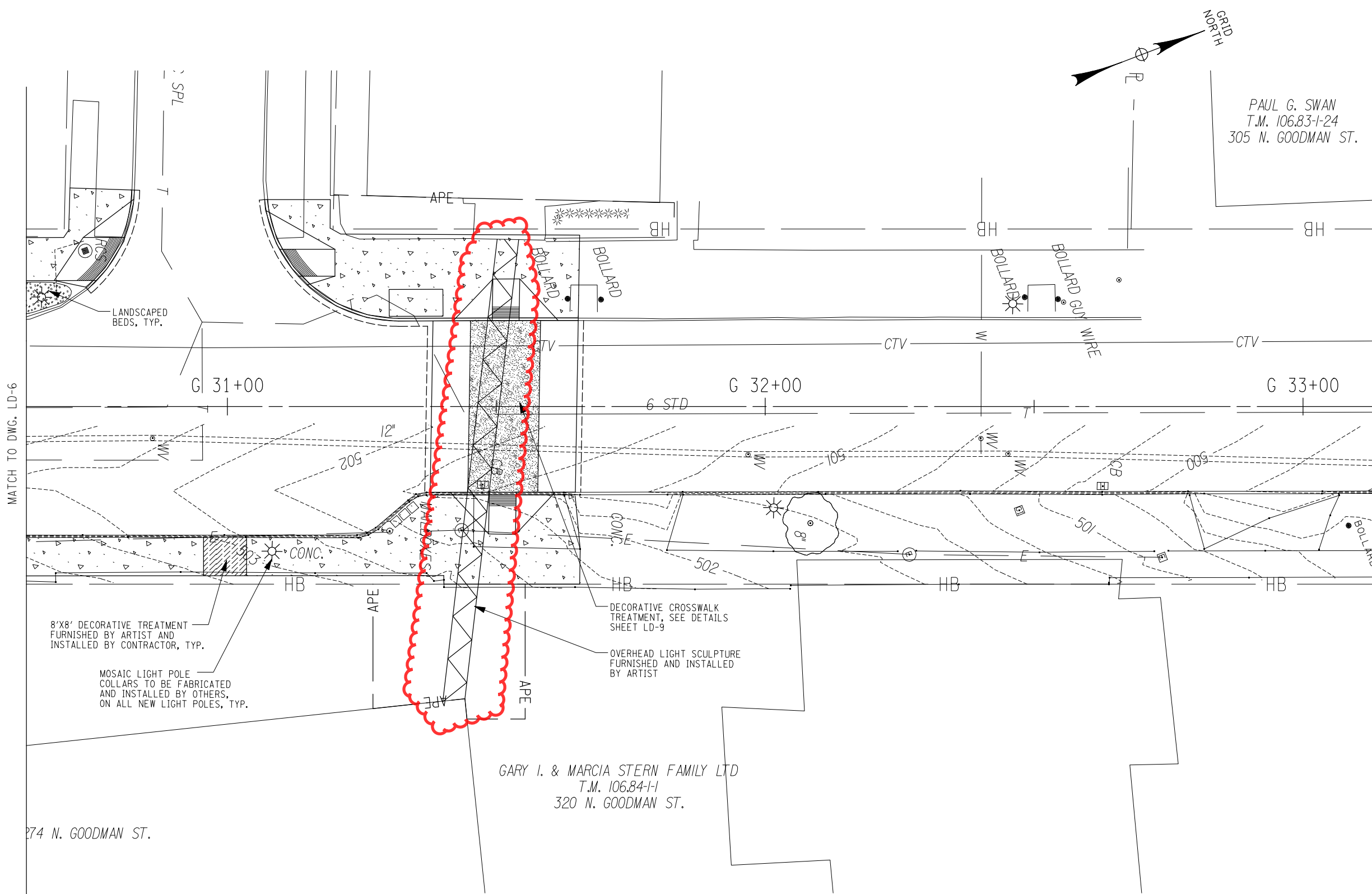
NOTE:
Unauthorized alteration or addition to this drawing is a violation of the New York State Education Law Article 145, Section 7209.

**LANDSCAPE
DETAILS
(VILLAGE GATE
LIGHT SCULPTURE)**

Project Manager:
T.W.L.
Designed by:
S.E.P.
Drawn by:
S.E.P.
Checked by:
R.C.B.
Date Issued:
October 2009
Scale:
1"=20'

Project Number: **7552.00** File Name: **755201_eph_lad_07.dgn**
Drawing Number:

LD-7



PAUL G. SWAN
T.M. 106.83-1-24
305 N. GOODMAN ST.

GARY I. & MARCIA STERN FAMILY LTD
T.M. 106.84-1-1
320 N. GOODMAN ST.

- LEGEND**
- INTEGRAL COLOR AND STAMPED CONCRETE PAVEMENT (SEE DETAIL SHEET LD-X)
 - BRICK PAVEMENT (SEE DETAIL SHEET LD-8)
 - DECORATIVE CROSSWALK TREATMENT (SEE DETAIL SHEET LD-9)
 - LANDSCAPED AREA (SEE DETAIL SHEET LD-10)

MATCH TO DWG. LD-6

274 N. GOODMAN ST.